



## Moduflex<sup>+</sup> 36kW DC Power Core

### PRODUCT DESCRIPTION

The Moduflex+ series is designed using Enetek's state of art high efficiency switchmode rectifier modules and intelligent controller, complete with the respective load and battery distribution, AC incoming as well as surge protection. The solution can be customized accordingly to specific requirements.

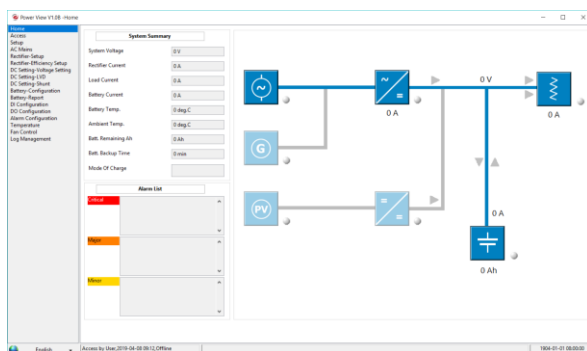
The user friendly SMU01 controller, coupled with its compact size and simple-to-operate interface, is highly adaptable and provides the monitoring and management of the system solution.

### APPLICATIONS

- Macro cell BTS
- Microwave
- LTE / WiMax
- FTTX
- Broadband Access
- Optical Fibre Transmission System
- IDC (Internet Data Centres)

### KEY FEATURES

- Hot-Swap Rectifier Modules
- Modular, Scalable Cabinet Design
- High Power Density
- Highly Efficient @ >96%
- Front-to-back Airflow
- Excellent EMC Performance
- Wide Input Voltage Range
- Wide Temperature Range
- Compliant with Global Standards



## TECHNICAL SPECIFICATIONS

MODEL	Moduflex+
Capacity Range	36kW
<b>INPUT SPECIFICATIONS</b>	
Mains Input Configuration	1-Phase 230Vac
	3-Phase 230Vac ( $\Delta$ )
	3-Phase 400Vac+N (Y)
Power Factor	$\geq 0.99$
Frequency	45Hz to 65Hz
THD	< 5% (50% to 100% load)
Input Protections	Soft Start
	Surge Protection
	Overvoltage Protection
<b>OUTPUT SPECIFICATIONS</b>	
Nominal Output Voltage	48.0Vdc
Output Power	36kW
Efficiency	>96%
<b>BATTERY DISTRIBUTION</b>	
Battery Low Voltage Disconnect	BLVD @ 500A
Battery Distribution	4 x 27mm width 80A-125A 1P MCB (Configurable)
<b>LOAD DISTRIBUTION</b>	
Load Low Voltage Disconnect	LLVD is optional
Load Distribution	12 x 18m width 6A-63A 1P MCB (Configurable)
<b>CONTROLLER and RECTIFIER TYPE</b>	
Rectifier Module	ETR <sup>+</sup> range of rectifier modules
Controller Module	SMU01 (refer to datasheet)
<b>ENVIRONMENTAL</b>	
Operating Temperature Range	-20°C to +75°C (de-rates above 55°C)
Storage Temperature Range	-40°C to +70°C
Relative Humidity	Operating: 5% to 98% RH non-condensing
	Storage: 0% to 98% RH non-condensing
Acoustic Noise	<58dB @ full load, 40°C
<b>PHYSICAL</b>	
Dimensions WxDxH	482 x 390 x 311.15 (mm) (7U)
Net Weight	~25kg (excluding rectifier modules)
<b>DESIGN STANDARDS</b>	
Electrical Safety	EN/IEC60950
EMC	EN55022/CISPR22 Class B, EN61000-4-2/-3/-4/-5/-11

Due to continuous product development, specifications are subject to change without prior notice

Rev01

www.enetek-power.com : sales@enetek-power.com

